

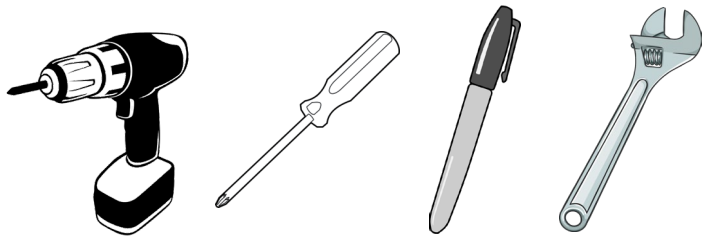
LSFS SQUARE GANTRY ASSEMBLED

- When using lugs a white washer is to be placed on the inside of glass - between the structure and the glass.
- Lugs should be screwed in finger tight so as not to damage glass.
- Assembly Sets provided in bags labeled A to F ( C only used on 5 / 6 length units )

EXPLODED PARTS DIAGRAM

## TOOLS REQUIRED

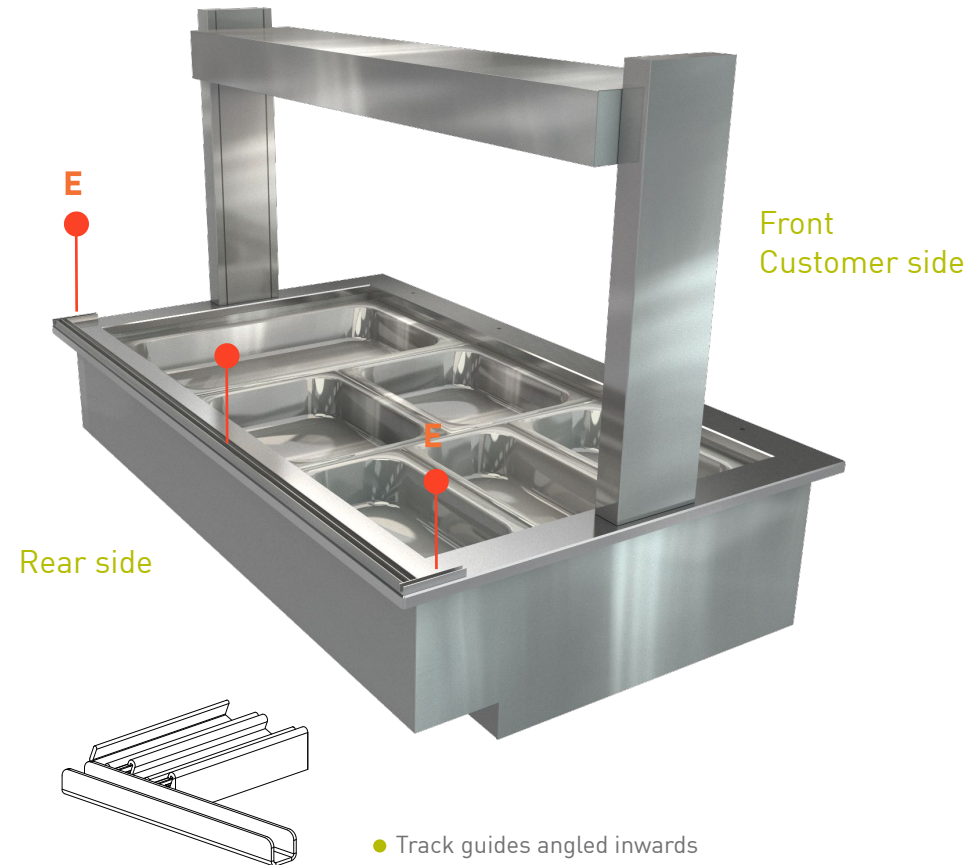
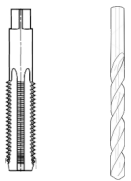
Power drill  
Phillips screw driver  
Marker pen



## TOOLS SUPPLIED

Set F

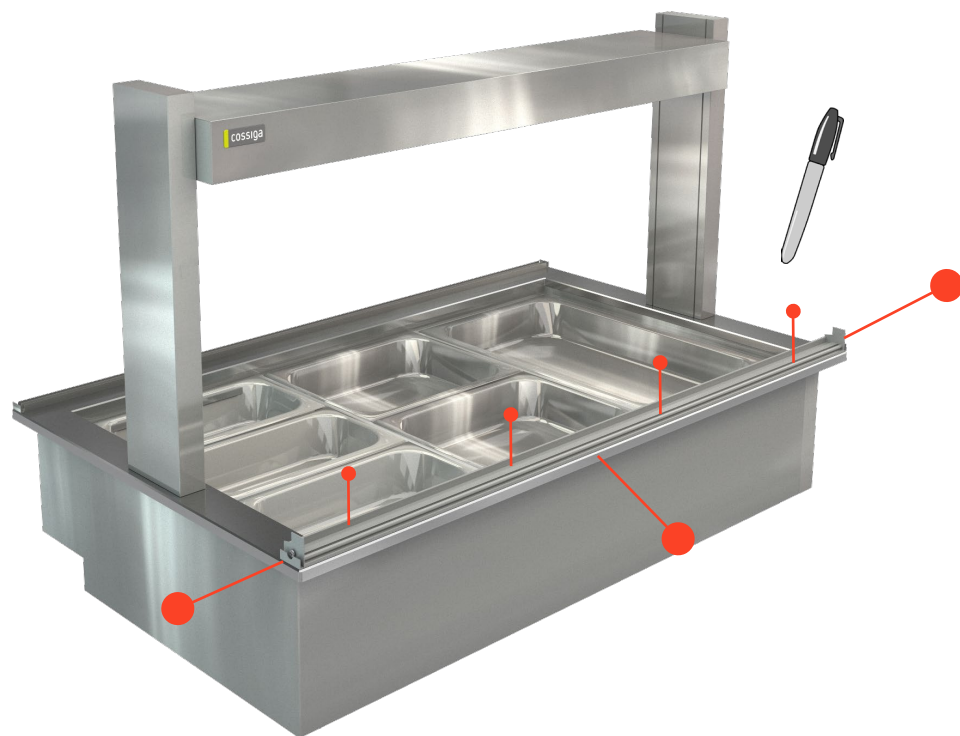
M4 Tap x 2  
3.2mm Drill bit x 2  
M4\*10 flat head



## INSTALL REAR BOTTOM TRACK & GLASS GUIDES

# 1

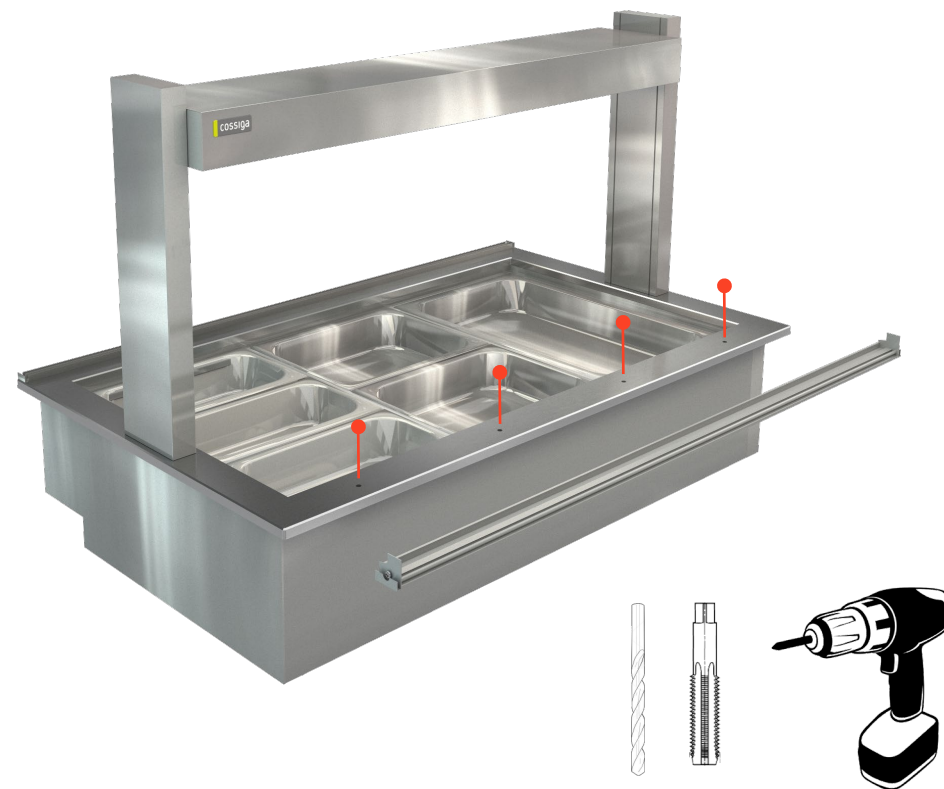
Position rear side glass guides **E** Remove double sided tape and stick down. Position rear bottom door track. Make sure the track guides are angled inwards to accept angled sliding rear doors. If using rear prep-shelf install this first.



## INSTALL FRONT BOTTOM HINGE RAIL

# 2.

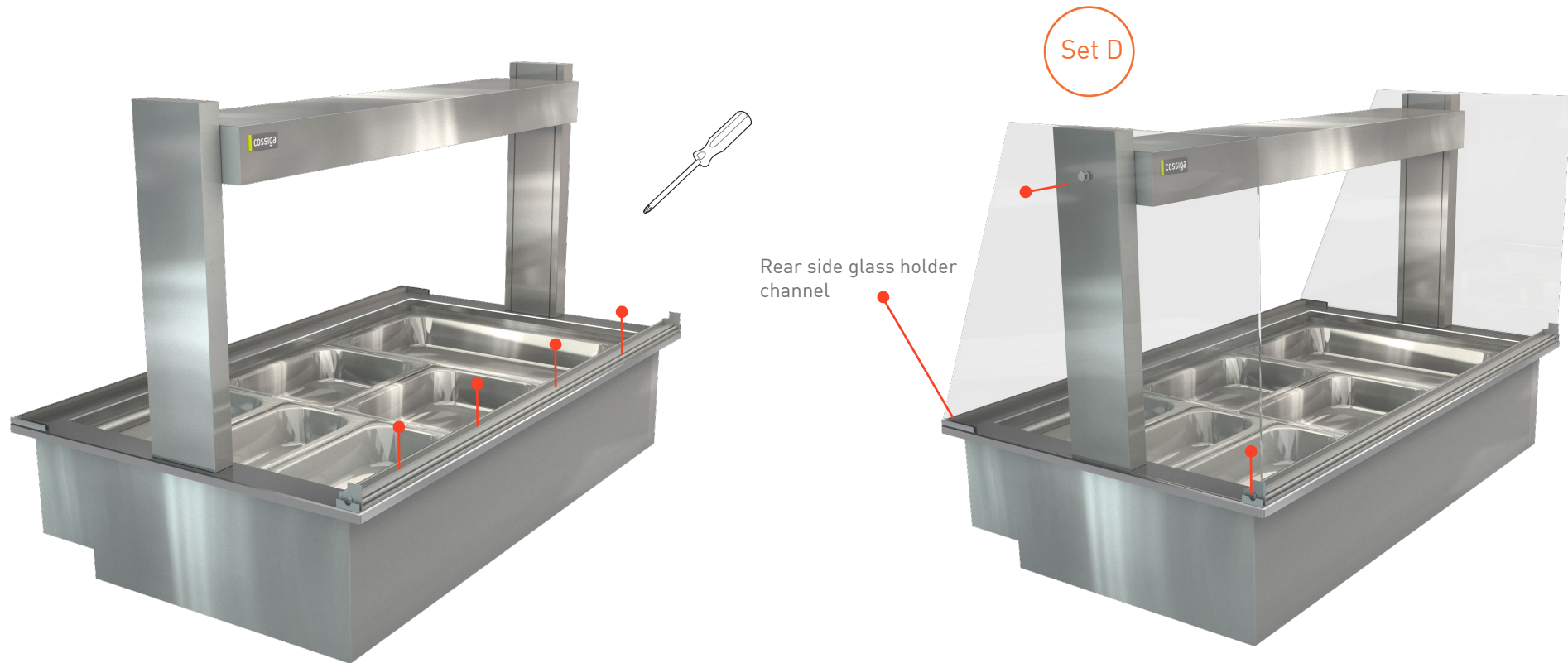
Fit the front glass bottom hinge rail. With the side glass holders attached, line up with the front and each side. Use a marker pen and mark through the holes for drilling.



## INSTALL FRONT BOTTOM HINGE RAIL

# 3.

Put aside the front glass bottom hinge rail. Drill the holes with 3.2mm bit. Use the M4 tap to thread the holes.



## INSTALL FRONT BOTTOM HINGE RAIL

# 4.

Re-position the hinge rail and screw into position with the M4 10mm phillips head screw **F**.

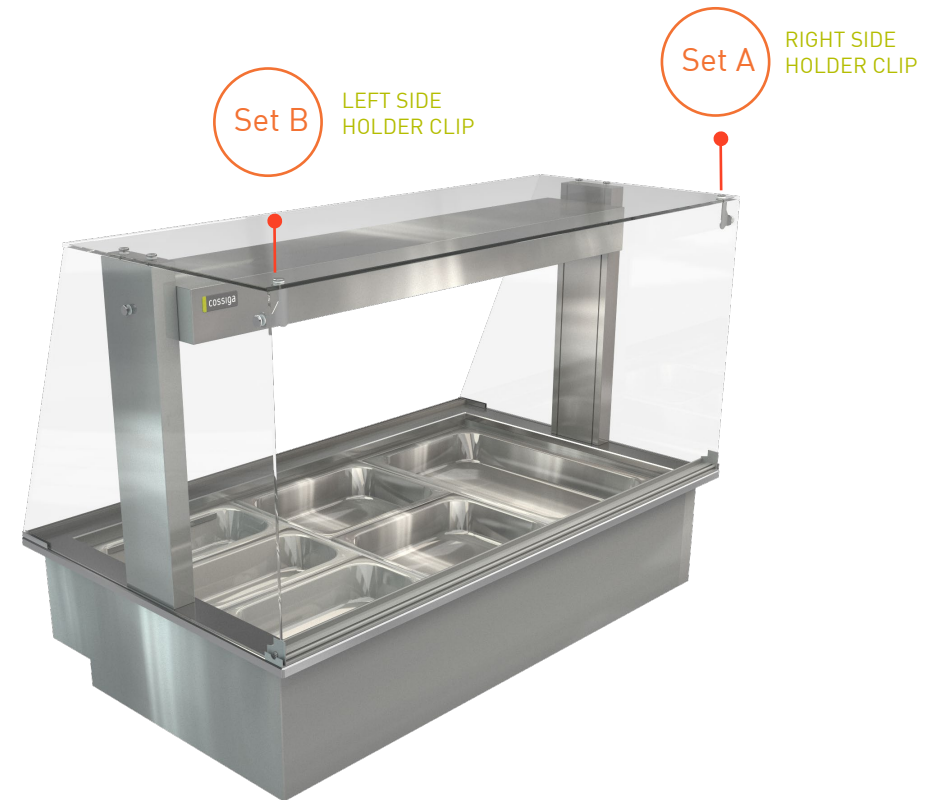
## INSTALL SIDE GLASS

# 5.

Position glass into front and rear side glass holders. Insert white plastic washer between canopy post and glass and screw in long lug M5 22mm **D** until finger tight.



Set D



Set B

Set A

## INSTALL TOP GLASS

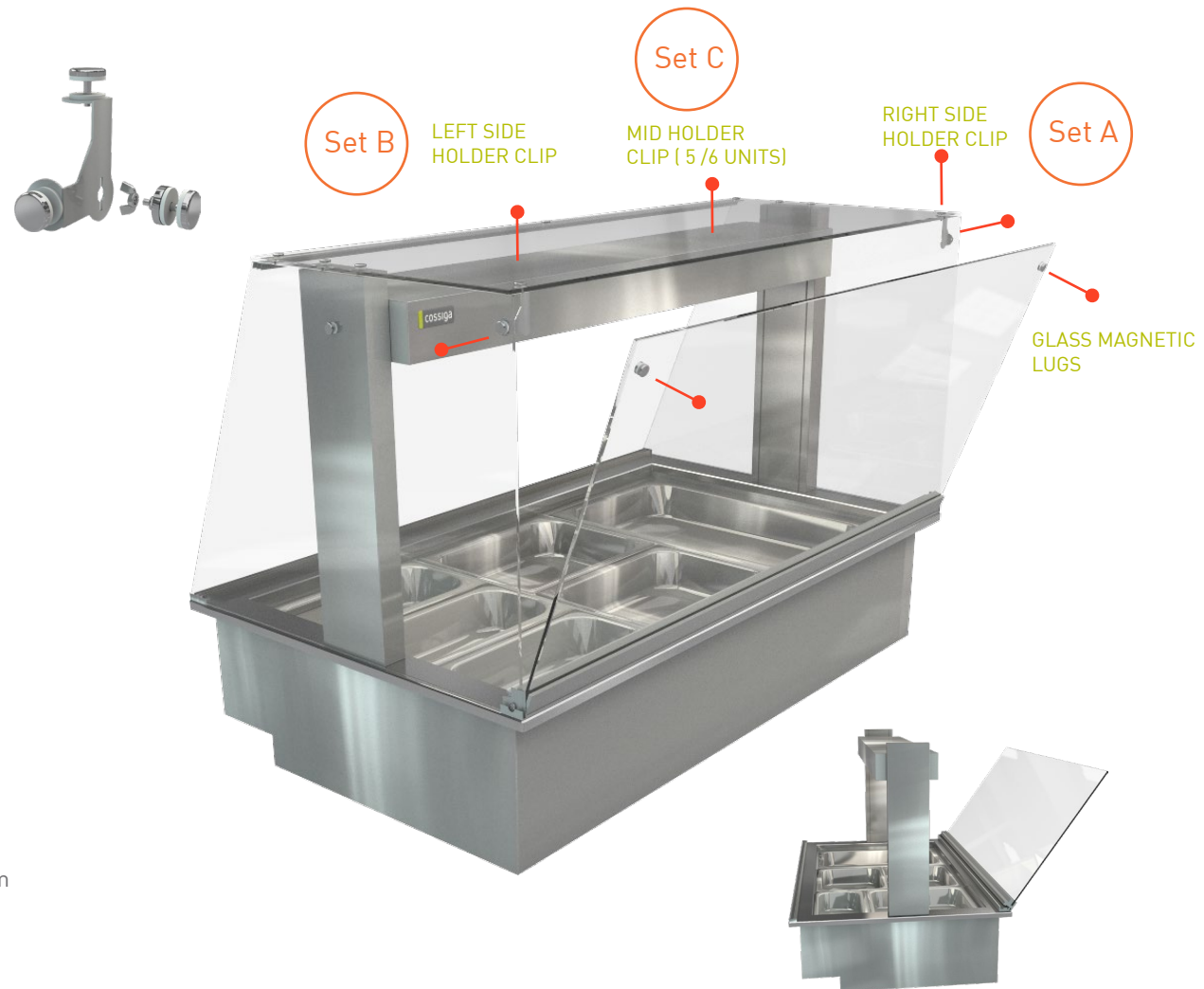
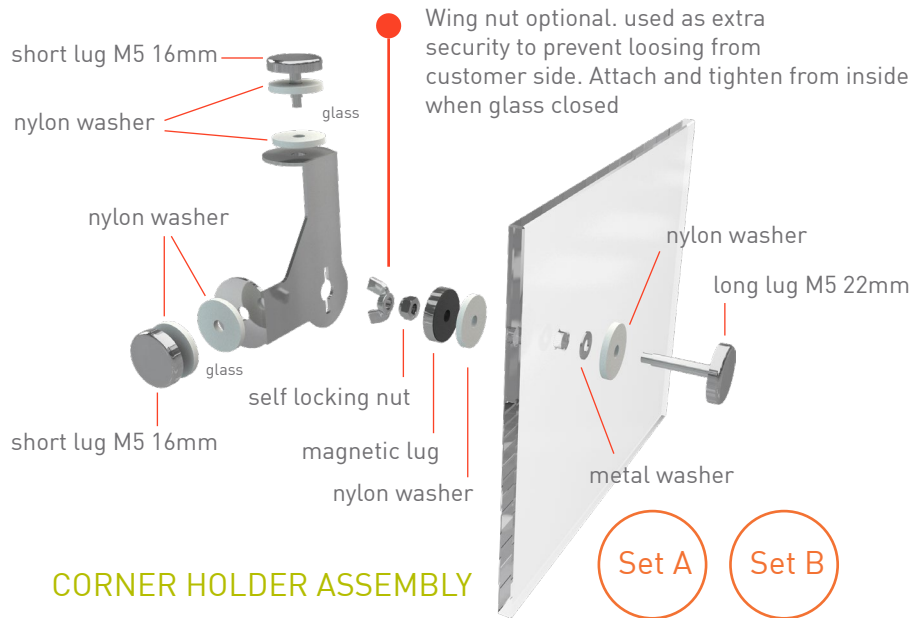
# 6.

Insert white plastic washer between canopy post and glass. Position top glass on posts and screw in long lug M5 22mm **D** until finger tight.

## INSTALL FRONT GLASS HOLDER CLIPS

# 7.

Install front glass corner holder clips. Open the front glass and install left and right (mid if supplied) holders into top and side glass. sequence on next page



## INSTALL FRONT GLASS

# 8

Lift the front glass at an angle and place into the bottom hinge rail. Check function of hinge and make sure it locks at 45° and 90°. Install the magnetic lug in front glass.



**9.** **INSTALL TOP REAR DOOR TRACK**  
Insert white plastic washer between track and glass. Position top rear track with guides pointing to rear. screw in long lugs until finger tight.

**10.** **INSTALL REAR DOORS**  
Install rear sliding doors. Lift and drop into rear tracks.  
Assembly is complete !!  
Enjoy your new COSSIGA unit.  
Please follow all maintenance guidelines to ensure longevity of the food display cabinet.